



# salvacion

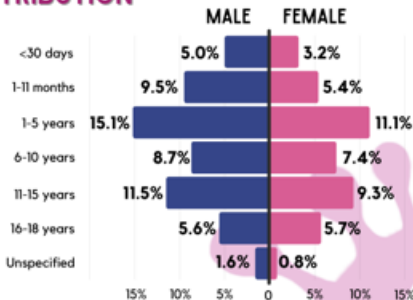
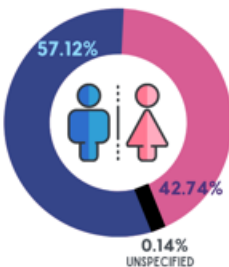
Surveillance and Analysis of COVID-19 in Children Nationwide

CASE BULLETIN #4 DEC 31, 2021



Data collection is still ongoing. Submit your **CONFIRMED** and **PROBABLE** pediatric COVID-19 patients at [salvacion.pidsphil.org](http://salvacion.pidsphil.org)

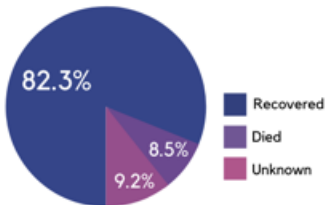
## AGE AND SEX DISTRIBUTION



# 2,127

## REPORTED CASES AS OF DEC 31, 2021

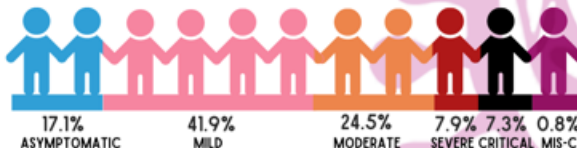
## OUTCOME



OUTPATIENT  
10.5%

HOSPITALIZED  
89.5%

## DISEASE SEVERITY



## COMORBIDITIES

HEMATOLOGIC/ONCOLOGIC DISEASE	7.4%
NEUROLOGIC/DEVELOPMENTAL DISEASE	7.2%
GASTROINTESTINAL DISEASE	6.0%
CARDIAC DISEASE	3.8%
OBSESITY	3.3%
KIDNEY DISEASE	3.1%
BRONCHIAL ASTHMA	2.6%
PREMATURITY	2.1%

GENETIC/METABOLIC	1.5%
TUBERCULOSIS	1.5%
MALNUTRITION	1.0%
ALLERGIC DISEASE	0.9%
ENDOCRINOLOGIC	0.8%
PREGNANCY	0.6%
RHEUMATOLOGIC	0.5%
SMOKING	0.2%
IMMUNODEFICIENCY	0.1%
PSYCHIATRIC	0.1%

## CO-INFECTIONS

SEPSIS	6.3%	DENGUE FEVER	4.8%
HEALTHCARE ASSOCIATED PNEUMONIA	2.1%	TUBERCULOSIS	1.5%
		INFLUENZA	0.3%



# salvacion

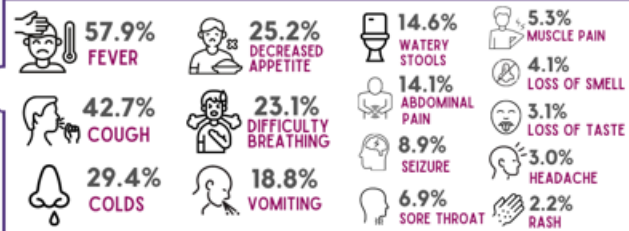
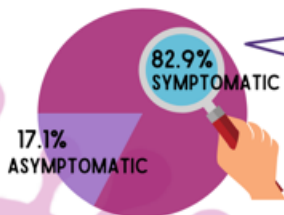
Surveillance and Analysis of COVID-19 in Children Nationwide

CASE BULLETIN #4 DEC 31, 2021



Data collection is still ongoing. Submit your **CONFIRMED** and **PROBABLE** pediatric COVID-19 patients at [salvacion.pidsphil.org](https://salvacion.pidsphil.org)

## CLINICAL MANIFESTATIONS



## COMMON LABORATORY PARAMETERS

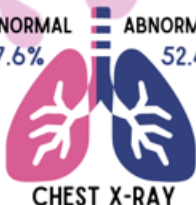


	(MEDIAN)						PROCAL-CITONIN	D-DIMER	FERRITIN	LDH	IL-6
	WBC x10 <sup>9</sup> /uL N=1775	NEUTROPHILS N=1757	LYMPHOCYTES N=1758	PLATELETS x10 <sup>9</sup> /uL N=1082	CRP mg/L N=799	ESR mm/hr N=184	ng/L N=515	ng/L N=157	ng/L N=235	U/L N=206	pg/ml N=77
NON-SEVERE	8.8	0.54	0.35	308	5	19	0.16	0.95	176.5	366	91.5
SEVERE/ CRITICAL	11.1	0.61	0.30	255	12	34.5	1.0	1.64	511.5	617	120
MIS-C	12.0	0.85	0.09	181	107	40	16.2	2.4	712	345	-

\*NON-SEVERE INCLUDES ASYMPTOMATIC, MILD AND MODERATE CASES

## MANAGEMENT

NORMAL 47.6% ABNORMAL 52.4%



CHEST X-RAY



73.5% NO OXYGEN SUPPORT  
26.5% W/ OXYGEN SUPPORT  
- NON-INVASIVE 65.0%  
- INTUBATED 35.0%



3.1% REMDESIVIR  
0.5% OSELTAMIVIR  
0.3% LOPINAVIR/RITONAVIR



11.0%  
CORTICOSTEROIDS



3.3%  
IVIG



0.2%  
TOCILIZUMAB



0.3%  
CONVALESCENT PLASMA



0.2%  
INTERFERON