



# salvacion

Surveillance and Analysis of COVID-19 in Children Nationwide

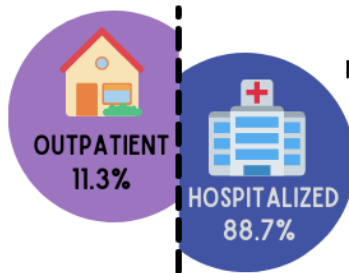
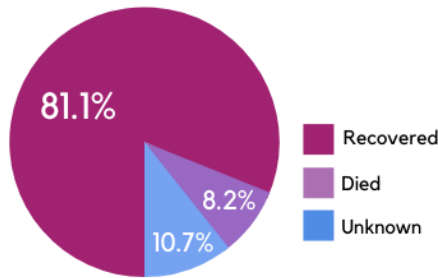
CASE BULLETIN #3 SEPT 30, 2021



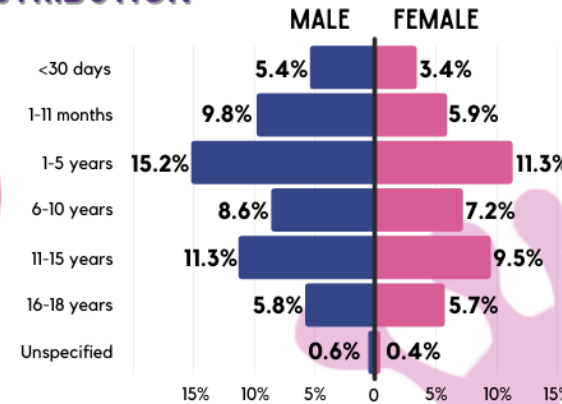
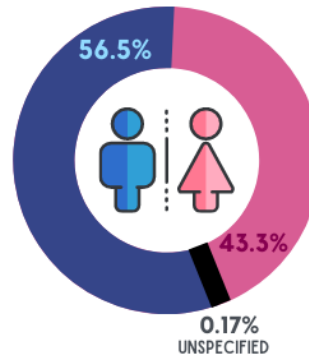
Data collection is still ongoing. Submit your **CONFIRMED** and **PROBABLE** pediatric COVID-19 patients at [salvacion.pidsphil.org](http://salvacion.pidsphil.org)

**1,811**  
REPORTED CASES  
AS OF SEPT 30, 2021

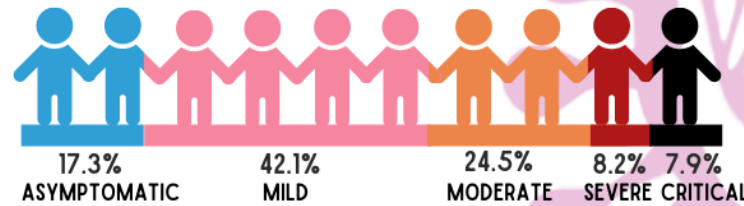
## OUTCOME



## AGE AND SEX DISTRIBUTION



## DISEASE SEVERITY



## COMORBIDITIES

Hematologic/Oncologic Disease	7.2%
Neurologic/Developmental Disease	7.0%
Gastrointestinal Disease	5.6%
Cardiac Disease	3.5%
Obesity	3.3%
Kidney Disease	3.2%
Bronchial Asthma	2.3%
Prematurity	2.2%

Genetic/Metabolic	1.4%
Tuberculosis	0.9%
Endocrinologic	0.7%
Allergic Disease	0.7%
Pregnancy	0.6%
Rheumatologic	0.5%
Smoking	0.2%
Immunodeficiency	0.2%
Psychiatric	0.1%

## CO-INFECTIONS

Sepsis	6.1%	Dengue Fever	4.6%
Healthcare Associated Pneumonia	2.1%	Tuberculosis	0.9%

For inquiries or suggestions, please email [pidsp.covid19@gmail.com](mailto:pidsp.covid19@gmail.com) or contact 0961-609-9661 or 0956-150-9002. Thank you for your significant contributions to the SALVACION registry!



# salvacion

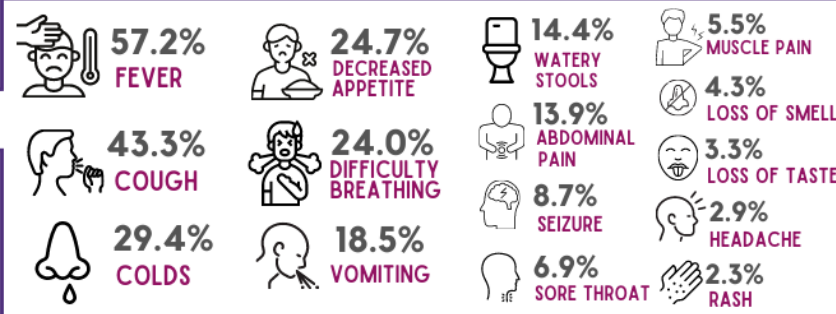
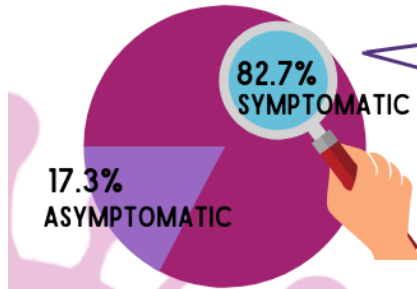
Surveillance and Analysis of COVID-19 in Children Nationwide

CASE BULLETIN #3 SEPT 30, 2021



Data collection is still ongoing. Submit your **CONFIRMED** and **PROBABLE** pediatric COVID-19 patients at [salvacion.pidsphil.org](http://salvacion.pidsphil.org)

## CLINICAL MANIFESTATIONS

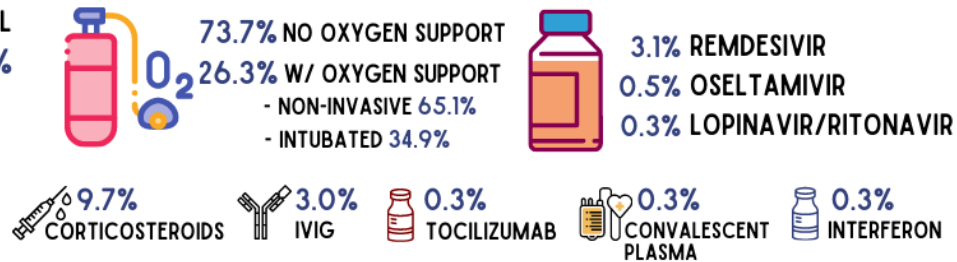
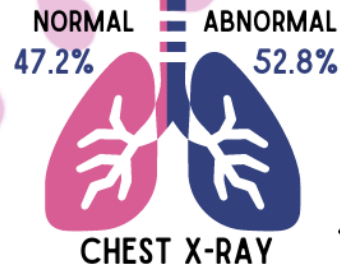


## COMMON LABORATORY PARAMETERS

	WBC x10 <sup>3</sup> /uL	NEUTRO- PHILS	LYMPHO- CYTES	PLATELETS x10 <sup>3</sup> /uL	CRP mg/L	ESR mm/hr	PROCAL- CITONIN ng/L	D-DIMER mg/L	FERRITIN ng/L	LDH U/L	IL-6 pg/ml
	N=1552	N=1547	N=1546	N=1109	N=654	N=131	N=410	N=125	N=188	N=164	N=69
ASYMPTOMATIC	9.2	0.52	0.37	340	0.6	23	0.11	---	---	---	---
MILD	8.3	0.54	0.36	300	5.0	12.5	0.15	---	---	---	---
MODERATE	9.8	0.56	0.34	296	7.0	27.5	0.30	1.45	175	352	84
SEVERE	10.9	0.61	0.31	249	16.8	36	0.59	2.12	500	471	54
CRITICAL	11.5	0.63	0.28	254	14.4	35.5	3.33	3.32	722	858	149



## MANAGEMENT



For inquiries or suggestions, please email [pidsp.covid19@gmail.com](mailto:pidsp.covid19@gmail.com) or contact 0961-609-9661 or 0956-150-9002. Thank you for your significant contributions to the SALVACION registry!