



salvacion

Surveillance and Analysis of COVID-19 in Children Nationwide

CASE BULLETIN #2 JUNE 30, 2021

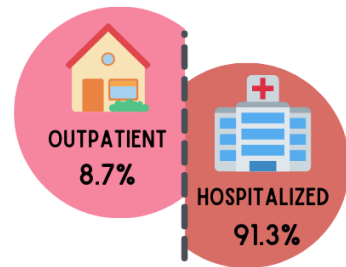
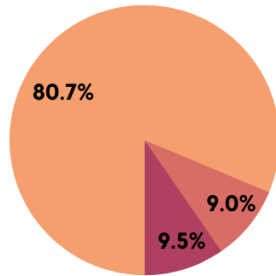


Data collection is still ongoing. Submit your **CONFIRMED** and **PROBABLE** pediatric COVID-19 patients at salvacion.pidsphil.org

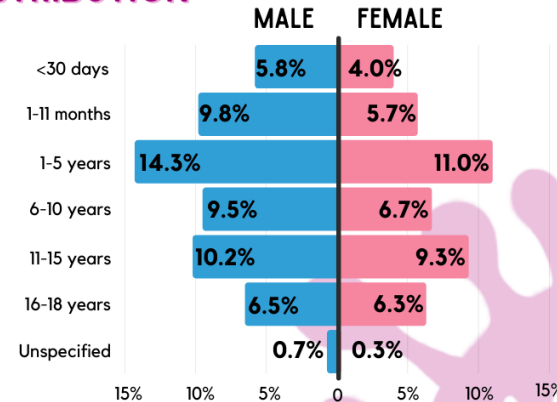
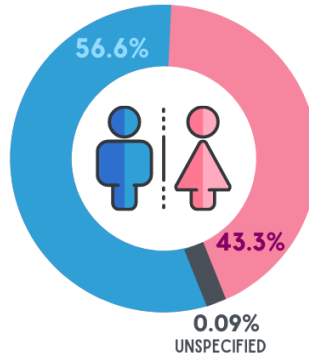
1,143

REPORTED CASES
AS OF JUNE 30, 2021

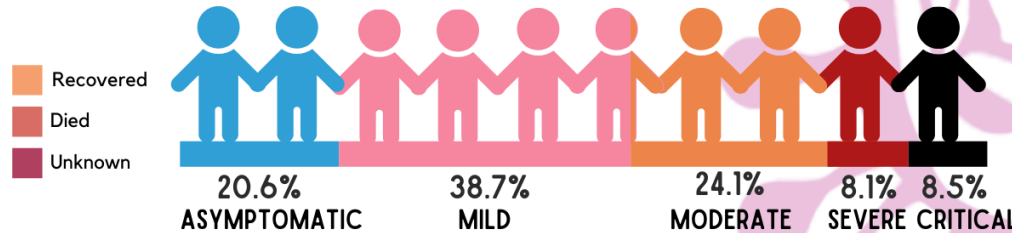
OUTCOME



AGE AND SEX DISTRIBUTION



DISEASE SEVERITY



COMORBIDITIES

Hematologic/Oncologic Disease	7.4%	Bronchial Asthma	1.5%
Neurologic/Developmental Disease	6.3%	Genetic/Metabolic	1.3%
Cardiac Disease	3.6%	Pregnancy	0.9%
Kidney Disease	3.6%	Rheumatologic	0.8%
Gastrointestinal Disease	2.5%	Tuberculosis	0.7%
Obesity	2.0%	Endocrinologic	0.4%
Prematurity	1.9%	Smoking	0.3%

CO-INFECTIONS

Sepsis	6.8%	Dengue	3.9%
Healthcare Associated Pneumonia	2.5%	Tuberculosis	2.3%
Fever			

For inquiries or suggestions, please email pidsp.covid19@gmail.com or contact 0961-609-9661 or 0956-150-9002. Thank you for your significant contributions to the SALVACION registry!



salvacion

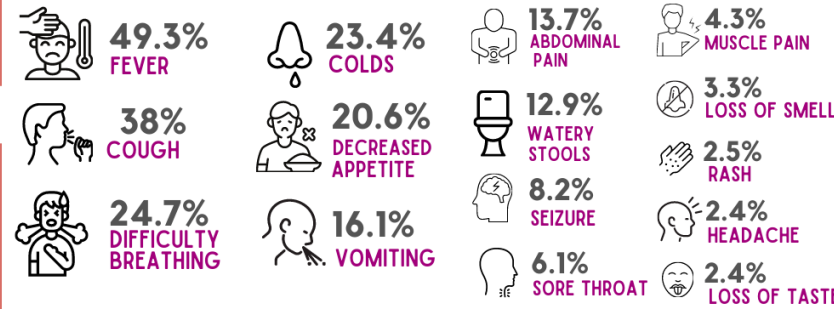
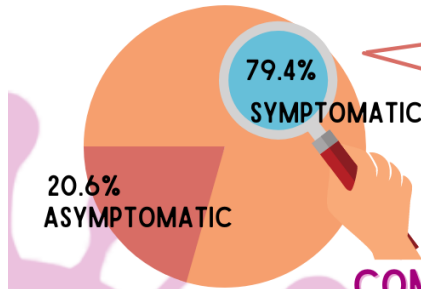
Surveillance and Analysis of COVID-19 in Children Nationwide

CASE BULLETIN #2 JUNE 30, 2021



Data collection is still ongoing. Submit your **CONFIRMED** and **PROBABLE** pediatric COVID-19 patients at salvacion.pidsphil.org

CLINICAL MANIFESTATIONS

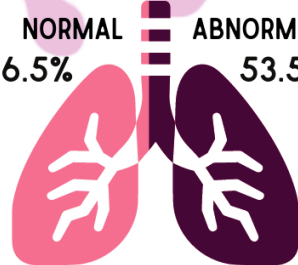


COMMON LABORATORY PARAMETERS

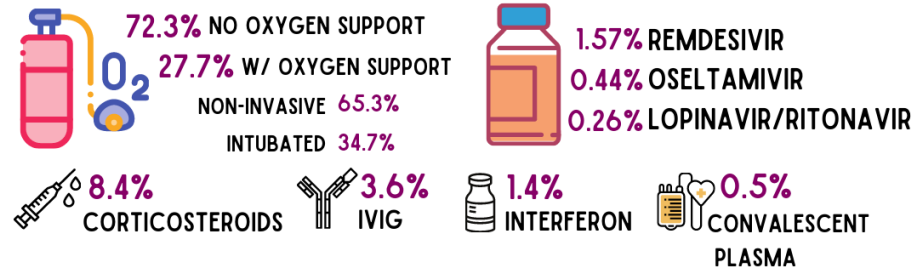
	(MEDIAN)						PROCAL-				
	WBC x10 ³ /uL N=1014	NEUTRO- PHILS N=1010	LYMPHO- CYTES N=1008	PLATELETS x10 ³ /uL N=1009	CRP mg/L N=389	ESR mm/hr N=51	CITONIN ng/L N=240	D-DIMER mg/L N=63	FERRITIN ng/L N=96	LDH U/L N=85	IL-6 pg/ml N=40
ASYMPTOMATIC	8.9	0.52	0.38	341	0.68	52	0.11	---	---	---	---
MILD	8.8	0.55	0.34	300	5.0	19	0.18	---	---	---	---
MODERATE	10.3	0.58	0.31	296	8.6	35	0.32	1.78	209	339	91.5
SEVERE	12.0	0.60	0.30	249	25.6	47	0.58	2.40	500.5	507	44
CRITICAL	11.8	0.63	0.27	253	12	39	2.23	4.0	680.9	834	149

CHEST X-RAY

NORMAL 46.5%
ABNORMAL 53.5%



MANAGEMENT



For inquiries or suggestions, please email pidsp.covid19@gmail.com or contact 0961-609-9661 or 0956-150-9002. Thank you for your significant contributions to the SALVACION registry!