



salvacion

Surveillance and Analysis of COVID-19 in Children Nationwide

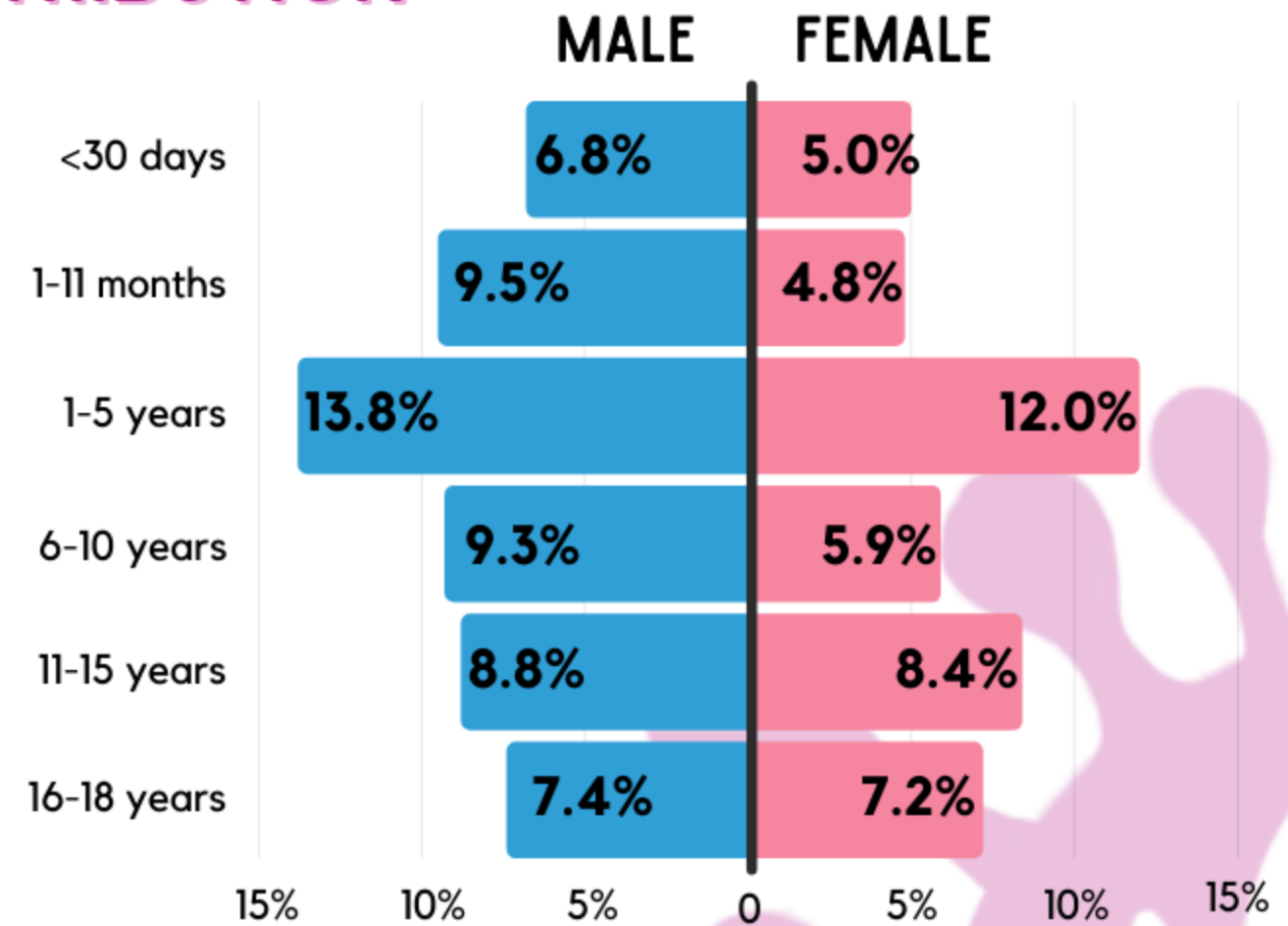
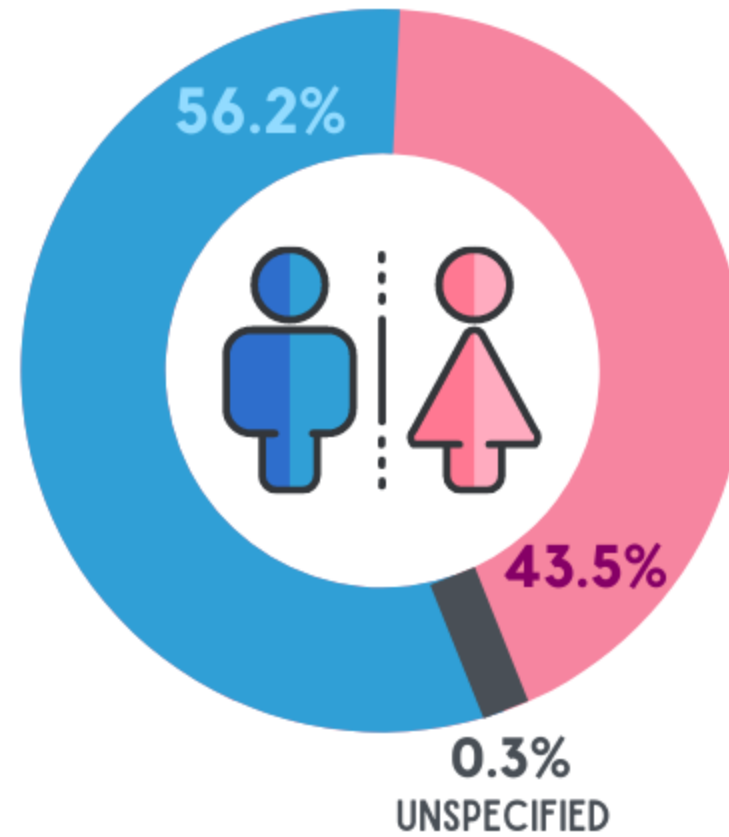
CASE BULLETIN #1 APRIL 30, 2021



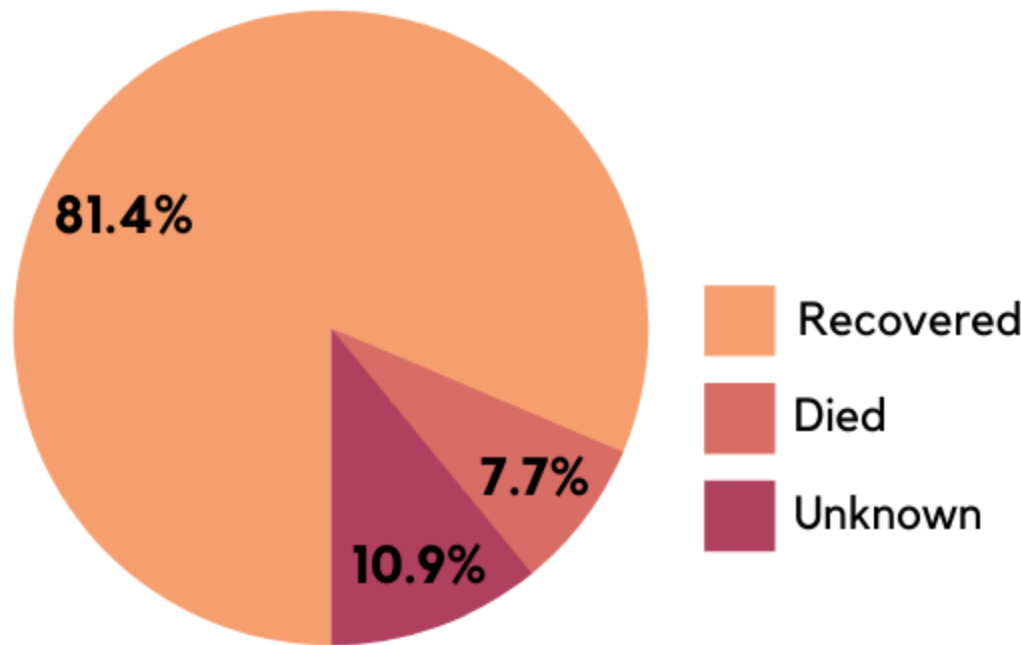
Data collection is still ongoing. Submit your **CONFIRMED** and **PROBABLE** pediatric COVID-19 patients at salvacion.pidsphil.org

559
REPORTED CASES
JULY 3, 2020 TO APRIL 3, 2021

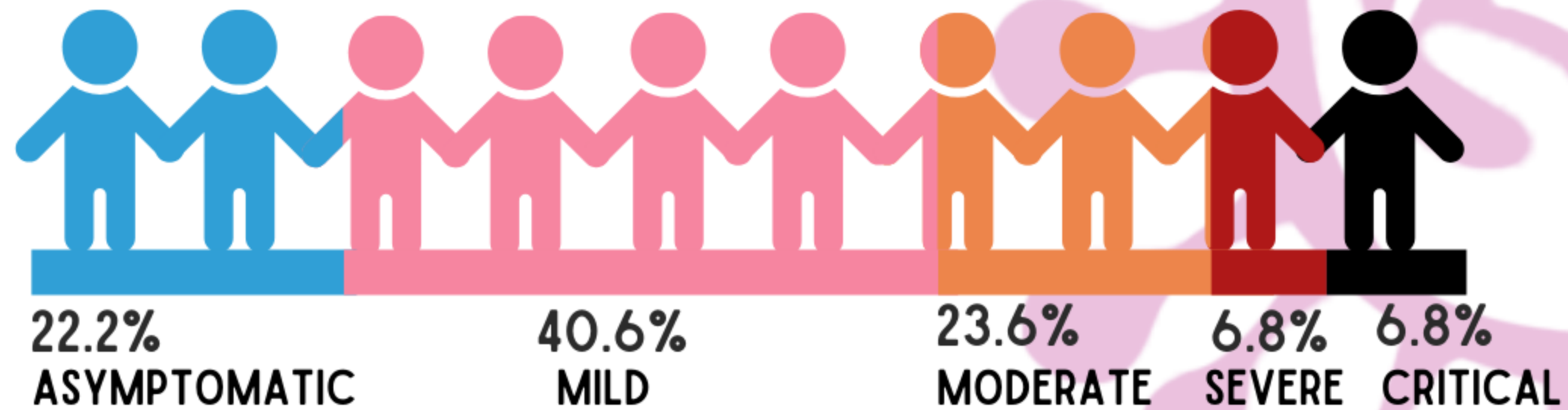
AGE AND SEX DISTRIBUTION



OUTCOME



DISEASE SEVERITY



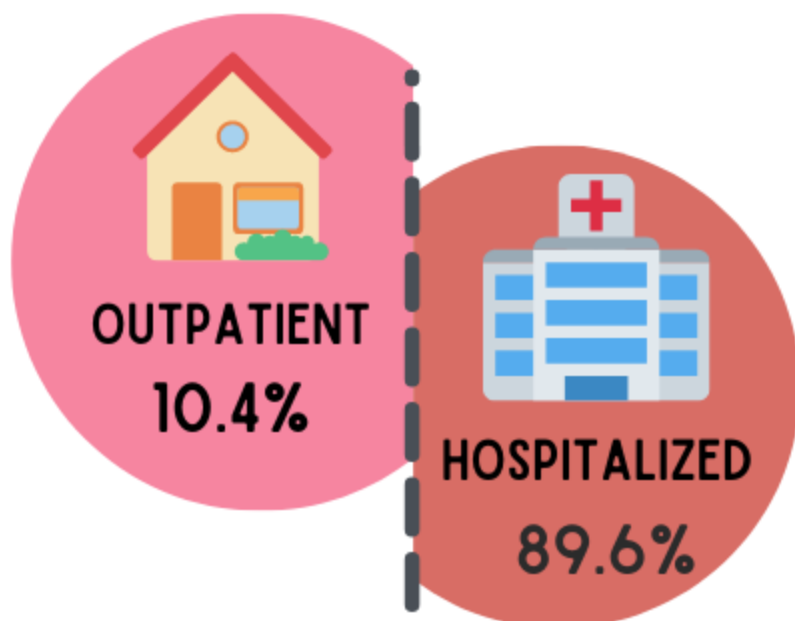
COMORBIDITIES

- Hematologic/Oncologic Disease 5.2%
- Cardiac Disease 4.3%
- Neurologic/Developmental Disease 3.8%
- Kidney Disease 3.2%
- Prematurity 2.2%

- Asthma 1.8%
- Obesity 1.1%
- Pregnancy 1.1%
- TB/LTBI 0.7%

CO-INFECTIONS

- 2.0% COVID-19 & Dengue
- 2.0% COVID-19 & Tuberculosis





salvacion

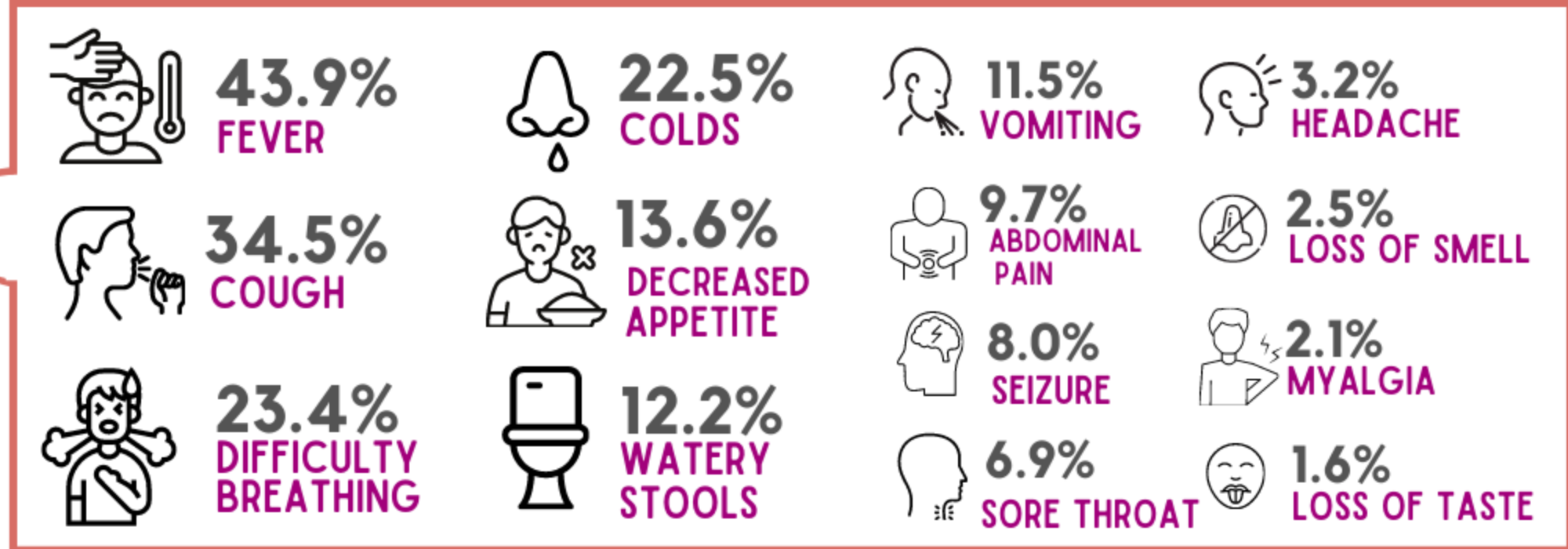
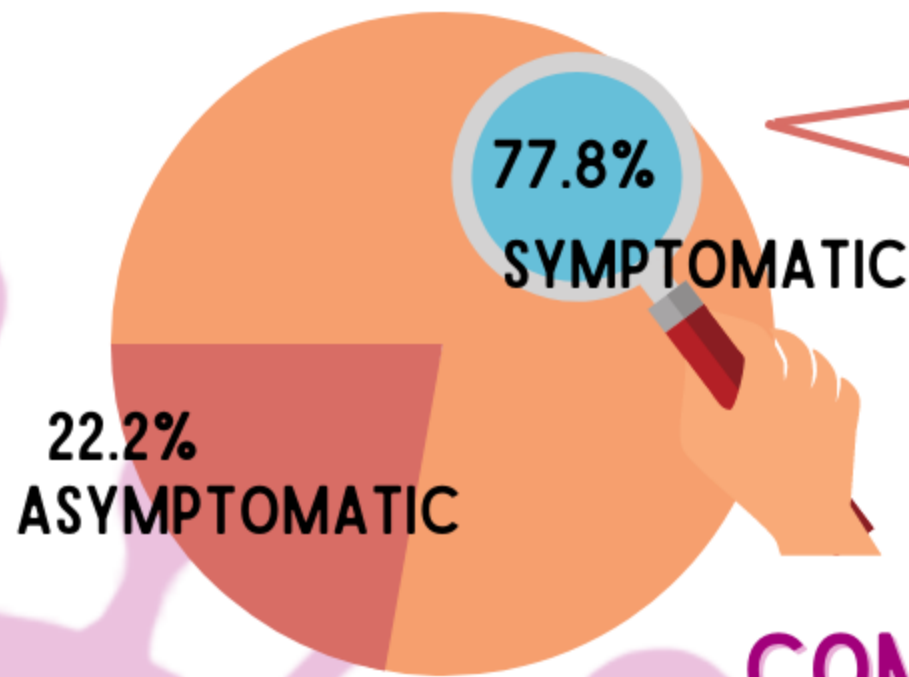
Surveillance and Analysis of COVID-19 in Children Nationwide

CASE BULLETIN #1 APRIL 30, 2021



Data collection is still ongoing. Submit your **CONFIRMED** and **PROBABLE** pediatric COVID-19 patients at salvacion.pidsphil.org

CLINICAL MANIFESTATIONS

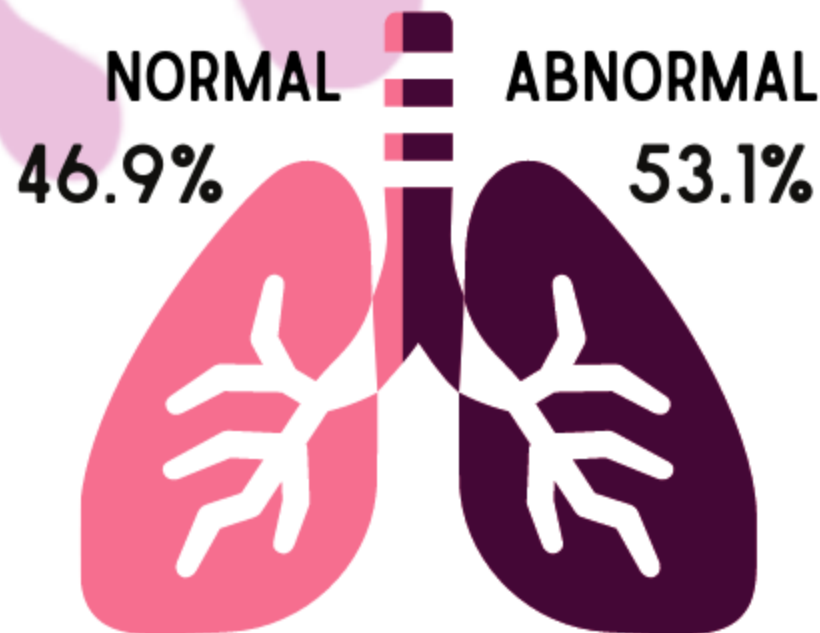


COMMON LABORATORY PARAMETERS

(MEDIAN)

	WBC x10 ³ /uL	NEUTROPHILS	LYMPHOCYTES	PLATELETS x10 ³ /uL	CRP mg/L	ESR mg/L	PROCALCITONIN ng/L	D-DIMER mg/L	FERRITIN ng/L	LDH U/L
ASYMPTOMATIC	8.6	0.47	0.41	348	0.6	---	0.10	---	---	---
MILD	8.6	0.56	0.35	301	6	10	0.18	---	---	---
MODERATE	11.1	0.58	0.33	298	6	22	0.16	1.78	125	339
SEVERE	12.1	0.62	0.25	272	6	73	0.23	2.97	272	678
CRITICAL	11.1	0.60	0.29	259	12	38	5.18	5.77	395	908

CHEST X-RAY



MANAGEMENT

